

Invest in Future Health Professionals

Many HMA members received assistance from the Health Student Loan Fund of the church during the 1970's and 1980's. While 91 loans were granted for health education totaling \$110,000, the Health Student Loan Fund no longer exists. HMA is creating a new **Health Education Endowment** for international students. Loan and scholarship opportunities to USA citizens are numerous but are very limited in developing countries. HMA supports education in the student's own country because the funds go farther.

This international precedent was set by the Professional Nurses Association (PNA) when nursing students in Honduras and Africa were supported. **HMA member Veronica Hernandez** received educational assistance and continues to work at La Buena Fe Honduras Clinic.

The PNA, starting in the 1980's, raised \$50,000 for an endowed nursing scholarship fund. These scholarships are still available for 3rd and 4th year baccalaureate program nursing students. Sheri Kirkpatrick of HealthEd Connect is the contact person for this scholarship.

HMA, however, wants to assist *all levels* of nursing education and other health career fields. Auxiliary nurses (nursing assistant equivalent) are often employed in more remote areas and may find work in their own village through government programs providing care to those with limited access to health services.



One generous **HMA member donated \$2000** to begin HMA's Endowment for international health students. Scholarship requests have been received that HMA is not yet able to consider due to lack of funds. *Please consider a donation to the Endowment or to current international health career students.* www.Education.HMACofChrist.org

Shadowing and Mentoring Students

Education and Networking continue to be two of the four areas of HMA Mission. Shadowing active professionals are a high priority for students looking at health field careers. **HMA needs volunteers** from a variety of health professions willing to enrich a student's experiences and career choices by offering an opportunity for students to see what they do at work.

Health field careers run a gamut from research to direct patient care to very specialized areas that may not be thought of as career opportunities. Encouraging future health professionals is important. "Association" is what HMA is about.

Association -

- a. *an organized body of people who have an interest, activity, or purpose in common;*
- b. *connection, relationship*

HMA also needs people who will mentor students and encourage them through their studies. Undergraduate and graduate programs can be extremely stressful and just a supportive email can make a difference. These connections may lead to lifelong friendships. *Contact the HMA office to participate.*

Educational Loan Recipient “Pays It Forward”

A Letter from Dr. Roger Cabida

When I was young I dreamed of becoming a doctor with the purpose of helping the sick, especially the less fortunate in our community. That dream came true with the financial assistance in 1977 of the R.L.D.S. Medical Dental Assoc., one of predecessor organizations of Community of Christ Health Ministries Association.

After graduation, my first assignment was to work in a rural health unit in Sto. Tomas, a remote town of Isabela Province and after six months, transferred to the emergency hospital in Tumauni of same province. After two and a half years, I moved to my home province and served as a municipal health officer to both Binalonan and Laoac. Four years after, I resigned from the government service and this gave me the chance to put up my own clinic and the opportunity to fulfill my vision of helping the poor. I conducted medical missions in areas where doctors aren't available. I saw the different walks of life, the rich, the average and those who can't even afford to provide their basic needs. These thoughts had been my grounds in continuing to conduct medical missions in different places in the Philippines.

I want to share to all the readers my experience in the first Medical Mission. This was in Laclac Community of Christ Congregation in San Manuel, Pangasinan in 1992. Laclac Congregation is one of the 11 Congregations in the Philippines. My staff and I were so anxious to conduct the said medical mission in the place. So many people were hoping and waiting for a free clinic. At first, it wasn't easy. In the early 90's, before you reach the place, you had to walk several miles of rough road. That was the first challenge for me and for the team.

One of the recipients of the said medical mission was Valerio Veloso. Valerio was diagnosed to have Hepatitis B. He had yellowish discoloration of the skin and eyes. People were so scared about his disease that he might spread it in their community. His case prompted us to decide to conduct a medical mission there. With the help of the World Church, we were able to provide the necessary treatment for Valerio and other patients.



Dr. Roger Cabida in his office with Valerio Veloso

Valerio's medication lasted for 6 months and was eventually treated. He now works as a volunteer Pastor in Laclac Congregation and a government employee of the Department of Environment and Natural Resources.

In the same year, the World Church, upon knowing of Pastor Valerio's case, immediately provided funds for screening and immunization against Hepatitis B. For those patients who were already found to have the disease, due medications were given.

I am very thankful to all the people who in one way or another had extended help and also for their unselfish support, and most especially our Dear Lord for His guidance. My ministry will not end here as long as I am still able and well. The medical missions that we had conducted in the past wouldn't be successful without help of our church, my staff, volunteers as well as donations from Gardena Congregation in California.

HMA member Roger Cabida shared his testimony at the HMA Open Membership meeting and World Conference Brunch April 2013. Dr. Roger donates professional services to the underserved people in the Philippines as loan repayment and "paying it forward" ministry.

Board of Director Nominations

HMA is accepting names of persons to be nominated for Board of Directors to serve for the three year term April 2014-April 2017. Interested persons are not required to live in the Independence, MO area but must be able to attend four quarterly meetings in person or by Skype. Since HMA's Board is active in the organization, each board member serves on at least one committee and supports HMA activities. Nominations will be approved at the January 2014 Board of Directors meeting and then submitted to the First Presidency for approval prior to a vote at the April 2014 Open Membership meeting.

Please contact the HMA office for an application at 816-833-1000 ext 1262 or HMA@CofChrist.org

Web: www.HMACofChrist.org

Mail: 1001 West Walnut
Independence, MO 64050

Email: HMA@CofChrist.org

Phone: (816) 833-1000 X1262

Fax: (816) 521-3084

Board of Directors

Tom Bennett, JD
Com. of Christ Legal Counsel, Retired

Nadine Z. Bennetts, MS
*Special Education
Blue Valley School District*

Paul Bennetts, CRNA
*Clinical Assistant Professor
University of Kansas Medical Center*

Howard Braby, MD
OB-Gyn Practitioner, Retired

Jeanne Earnest, MS
Psychologist, private practice

Terry Flowers, RPh
Centerpoint Medical Center

Fred Hahn, MD
ENT Practitioner, retired

Catherine Madden Zahniser, MD
Psychiatrist, Children's Mercy Hospital

Don Potts, MD
Family Practitioner, Retired

Max Ridings, PT
*Owner/Director
OrthoSport Rehabilitation, Inc.*

Sue Ridings, MS
Family Life Educator, retired

Kathy Robinson, RN, MSN
Nursing Administrator, retired

Gary Rummel, RDMS, RVT
*Sonographer
University of Kansas Hospital*

Chris Stone, MD
Pediatrician, Children's Mercy Hospital

Thelma Sword, RN, Ed.D.
*Associate Professor of Nursing
Graceland University*

Vickie Ward, APRN
Mental Health Practitioner, Retired

Staff

Paula Rummel, RN, B.A.
Executive Director

Diane Rogers, B.A.
Executive Assistant

HMA Needs Your Photos, Testimonies

Are you cleaning out files? Sorting photos? HMA is compiling information from past mission teams, Association information, and team experiences.

As an extension of the Wholeness Resolution WCR 1305, HMA is gathering data on the history within



Community of Christ of the many ways the R.L.D.S. Medical Dental Assoc., Professional Nurses Assoc., Saints Home

Economics Assoc., and other groups promoted wholeness of body, mind, and spirit through service to others.

As we acknowledge the passing of Lola Tordoff, Roy Schaefer, Otto Elser, Nelle Morgan, and others who were instrumental in these efforts, we realize this history must be preserved or it will be lost. Please contact the HMA office with photos and memories at 816-833-1000 ext 1418 or ext 1262.



HMA Guatemalan Members Care for Their Neighbor

A car accident injured Matilde's leg that became ulcerated from the knee to the ankle. She couldn't just "go" to the hospital for treatment. She has a 5 year old blind child with cerebral palsy confined to a wheelchair. There are no social service agencies in rural Guatemala to provide assistance or respite care.

Donations from HMA members and supporters assisted our international **HMA members** in Guatemala helping Matilde. Member **Dr. Gabriela Hernandez** created a treatment plan and **Nurse José Trinis Balon**, who lives in Matilde's village, provided daily antibiotics, dressing changes, and then frequent monitoring for several months.

Matilde's ulcerated leg was completely healed when seen by Dr. Gaby June 17, 2013 because of medication and critical care funding grants from HMA as well as the diligent medical care of Nurse José.

Funding for medications and clinics is ongoing. Your donation is needed!



Children Ask for Tire Gardens

When Guatemalan staff visited the Pacoj elementary school in June 2013 a second grader stood up and said "we need tire gardens and seeds for onions, beets, lettuce, and carrots". Students observed parents cultivating tire gardens and now wanted gardens at the school for more vegetables for their lunches. **HMA member Marlon Moran** delivered tires to the school, worked with training for the teachers and students, and helped celebrate the harvest.

World Hunger and HMA are funding this project.

HMA still needs to raise \$1500 for 2013.

Can you help?



Partnering with Friends of Education, Honduras

In 2013 the Futures and Biblioteca Leonardo programs started by Leonard and Lottie Brown, in the La Buena Fe area transitioned into "Friends of Education, Honduras". Although the Browns are still very active, this transition creates sustainable infrastructure for their work. The emphasis of their programs continues to focus on reducing barriers to education.

- *Biblioteca Leonardo provides books to rural schools that have no reading materials.*
- *Futures is a scholarship program for young girls and young women to continue schooling to junior high and high school.*
- *Grain silos made by PRR (Program for Rural Reconstruction housed at LBF) protect the government-provided food stores in schools.*
- *Dental services are paid for children with large areas of tooth decay.*
- *Health clinics in the rural schools provide medical checkups for every child and document height, weight, and abdominal girth for trends.*

HMA partners with Friends of Education, Honduras for several reasons. First, a higher level of education equates to healthier individuals and their families. Second, the "Friends" program provides tangible ways to improve nutrition and healthcare.

Rural Honduran Healthcare Focus Renewed

HMA is refocusing the goal of providing health care service in Honduras to remote villages that have little or no access to health care. We now support



HMA member Saira Aguilar and her rural clinic at La Boquita, a village in the mountains.

Medical and dental teams have supported healthcare at La

Buena Fe (LBF) Clinic in Honduras for more than 50 years since founded by Dr. John Blumenschein. For the first 25 of those years, La Buena Fe was very remote with few modern conveniences. In the late 1990's a new road was constructed, electricity was installed, and now buses stop at the front gate of the LBF compound several times a day.



HMA member Damaris Sarmiento is the National Director of the program shown here with HMA members Lottie and Leonard Brown.

The benefit of this partnership, also, is the potential for future health care professionals. The Futures program opens the doors of opportunity for young girls and women in impoverished rural communities who would otherwise not be educated beyond 6th grade. With education, more employment opportunities are available in health-related fields. In the Futures program a young lady can attend a special high school to become an auxiliary nurse or she may choose to enter an auxiliary nursing program after high school. Lastly, Futures' students have demonstrated seriousness about their studies maintaining good grades and a relationship exists already. Honduras university professional nursing programs are available but, of course, require a high school diploma to enroll.

With new modern infrastructure, numerous medical clinics are in the area staffed by Honduran MD's and providing dental services within 45 minutes travel of LBF. In 2013 the Honduran government began assigning a doctor to La Buena Fe Clinic as a site for Honduran medical school graduates providing their year of mandatory community service.

Dr. Pamela Stewart, who has taken health care teams to Honduras each year for many years, now resides part of the year at La Buena Fe and oversees LBF clinic operations. Various other medical practitioners continue to provide care, volunteering their expertise and time frequently at the LBF clinic. The USA-based LBF Foundation, renamed the Blumenschein Clinic Foundation, accepts donations for nurse salaries and clinic supplies.

Education of USA pre-professional students as well as indigenous nurses and health professionals is another renewed focus of HMA. Indigenous health field scholarships and loan-designated funds are available through HMA.

Did You Know....?

Wholeness and Well-Being WCR 1305 referred to a long history of addressing basic needs in people, health-related associations, and the Restoration movement concepts of wholeness of body, mind, and spirit. While we seek new ways to encourage healthier lifestyles, we remember ways the “worth of persons” has been lifted us through innovative ministries during different periods in history.

1898: A home for the aged was established in Lamoni, Iowa. Within several years, additional nursing homes were added in Independence and Holden, Missouri and in Kirtland, Ohio. The church maintained a home for the elderly and senior appointees in Independence named Resthaven established in 1956 (more recently called The Groves).

1906: Planning began for a church hospital, the Independence Sanitarium and Hospital. The hospital opened in 1909 providing care especially for church members but was also open to the public.

1910: A School of Nursing was added at the “San”. It functioned as a 3-year diploma school of nursing until 1968 when it transitioned to a four-year BSN program offered through Graceland (College) University.

1911: The Saints’ Children’s Home for orphaned and homeless children was established in Lamoni, Iowa.

1957: Dr. John Blumenschein left his practice in Independence, MO and opened the La Buena Fe clinic in Honduras. Health teams of doctors, dentists, practitioners and nurses continue to provide healthcare at the clinic.

1957-1960’s: Although unusual for a denomination to have church-related associations, our church supported creating professional associations instrumental in promoting health and wholeness in domestic and international activities.

- RLDS Medical-Dental Association (1957),
- RLDS Professional Nurses’ Association (1960),
- Saints Home Economics Association (dietitians and home economics educators),
- Chiropractors Association and other groups.

1969: Missions Health Foundation was created to support health and wholeness in the church mission field. MHF officially merged with Outreach International in 1989.

1972: World Conference action formed a Health Ministries Commission. The resolution recognized the importance of health in the ministry of Jesus and the increasing need for health professionals to be involved in the work of the church. The first Commissioner was Roy Schaefer, DDS.

Roy led many health and wholeness initiatives in the church over the years and was instrumental with Charles Neff and Bill Higdon in creating Outreach Inc, forerunner to Outreach International.



Early 1970’s: Health teams began to work hand-in-hand with church missionaries. Health professionals and medical teams began going to areas where church missionaries were working including: Haiti, Philippines, Korea, India, and Latin America.

1978-1996: Wallace B. Smith, MD served as the President of the church. He was a practicing ophthalmologist in Independence, Missouri prior to becoming Church President.

1979: Outreach International was created to support sustainable health and wholeness with people living in poverty. Today, Outreach works with people in 9 countries.

1979: The World Hunger Committee was formed by World Church action in 1979. Its purpose is to provide funds to alleviate hunger, to educate persons about hunger issues, and advocate on behalf of the hungry.

1984: Inspired counsel (D&C 156), calling to build the Temple, reminded the church that “wholeness is to be fostered through body, mind, and spirit as part of the peacemaking process” and should be upheld as part of Temple Ministries.

2002: Health professional associations merged into the *Community of Christ* Health Ministries Association (HMA) along with others interested in promoting health. HMA supports both domestic and international health initiatives.





Donation and/or Membership Form

Membership is open to health care practitioners and anyone passionate about promoting health through ministries to the body, mind, and spirit.

Name:

Address:

City, State Zip:

Phone: **Cell Phone:**

E-Mail:

Occupation/Job Title:

Credentials/Skills:

Congregation/Affiliation

Interested in Planned Giving Information from HMA **Yes / No**

Dues Categories: \$ _____ Student Member \$ 10.00
 \$ _____ Basic Member \$ 50.00
 \$ _____ Sponsor Member \$ 100.00
 \$ _____ Patron Member \$ 250.00 or more

Special Ministry Donations:

- \$ _____ Scholarship assistance for current international health career students
- \$ _____ Endowment for Health Education of international students
- \$ _____ Tire Gardens
- \$ _____ Guatemala Clinic Medications
- \$ _____ Guatemala Health Clinics
- \$ _____ Guatemala Critical Care Funding
- \$ _____ International health experience for USA students in healthcare fields of study
- \$ _____ Wallace B. Smith Young Adult scholarship for Health & Spirituality Workshop
- \$ _____ Congregational Health Ministry
- \$ _____ Health Promotion at congregations, reunions, health fairs

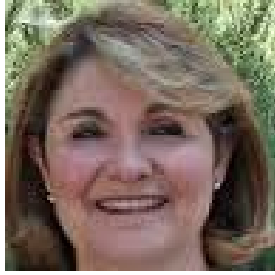
Signature: **Date:**

Check: \$ or Credit Card # / / / Exp. __ / __ Code: __ __

Mail to: Health Ministries Association, 1001 W. Walnut, Independence, MO 64050

On-line at: www.HMACofChrist.org/Forms/Membership.php

Dues and gifts are tax-deductible as prescribed by the rules of the IRS under Section 501c3.



Congregational Health Ministries Facilitator

Denise Leichter is the new HMA network facilitator for Congregational Health Ministers. The HMA handbook for Congregational Health Ministry is available to HMA members investigating this ministry or developing a program in their congregation.

Denise developed the Shamrock Ministry program for seniors in California which offers every congregation ways to include and value seniors in the ministries of the group. She developed a health brief that can be used in a newsletter or as a bulletin insert available online at www.CHM.HMACofChrist.org "Senior Safety Scavenger Hunt". This is a fun way to ensure friends and families are living in a safe environment that meets their current physical needs as they age.

Denise is willing to assist program coordinators as they look at the needs, personnel resources, and opportunities to offer a congregational health ministry program. The handbook outlining three different models is available to any HMA member current on dues and who complete a registration form so updates can be forwarded along with new information. Contact the HMA office for a registration form or more information. 816-833-1000 ext 1262 (Paula) or 1418 (Diane) or by email at: HMA@CofChrist.org

Denise will be at Graceland's Homecoming and at the Peace Colloquy in October. She can be contacted at: Denise@HMACofChrist.org