

Continuing Education

This continuing nursing education activity has been submitted for approval to the Missouri Nurses Association, an accredited approver by the American Nurses Credentialing Center's Commission on Accreditation.

Full workshop attendance on Saturday, August 22, 2009 required for nurses.

Other disciplines will receive a certificate of attendance up to 6.5 clock hours.

Planning Committee

Alice Sims, RN, BSN, Committee Chair, Care Advocate, The Groves
 Howard Braby, MD, Health Ministries Association, President
 Stacy Davis, MA, Director, Mental Health Promotion, Mental Health America of the Heartland
 Ed Dowell, MBA, Holistic Certification, Pastoral Care Hospice Volunteer
 Robert Fisher, Retired Attorney, Associate Chaplain, Centerpoint Hospital
 Steven C. Kellogg, Financial Officer, Central USA Mission Center
 Catherine E. Madden, MD, Psychiatrist, Children's Mercy Hospital and Clinics
 Paula Clum Rummel, RN, HMA, Executive Director
 Becky Savage, BSN, MN, Counsel to President and Member of First Presidency of Community of Christ
 Carl Turlin, Chaplain, Community of Hope, Community of Hope Committee of St. Matthew's, Raytown
 Josef Walker, Chaplain, Center for Religious Experience and Study



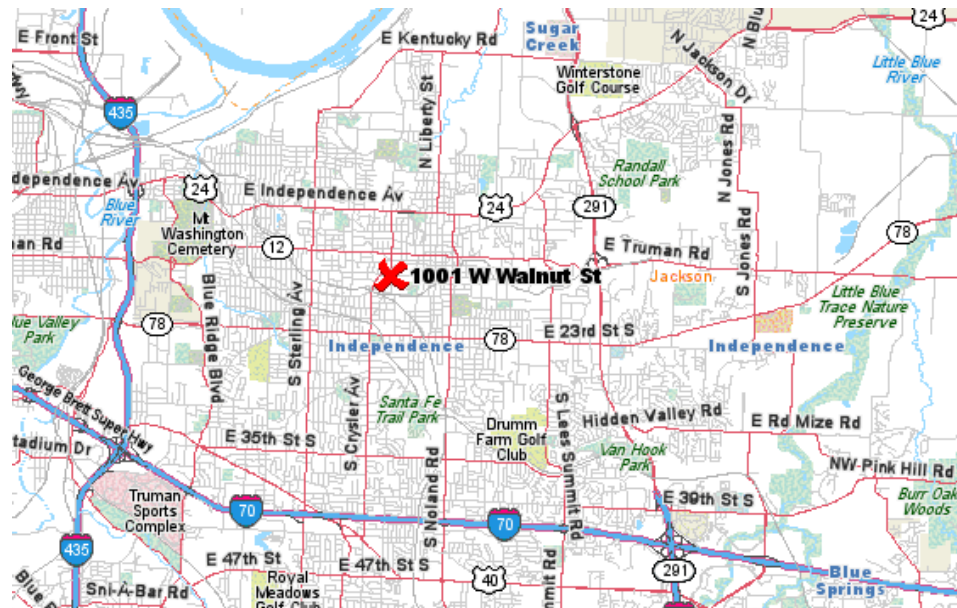
For more information on presenters and workshops visit us on-line

www.hmaCofChrist.org

or call 816-833-1000, ext. 1262



Join us in beautiful, historic Independence, Missouri



Health Ministries Association
 1001 W. Walnut
 Independence, MO 64050



7th Annual Health & Spirituality Workshop

In Times of Pain where is God?



Keynote Speaker

Ward Foley

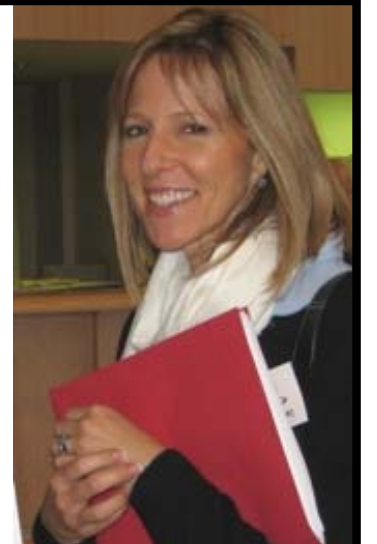
Author, *Thank My Lucky Scars*

Ward Foley's numerous physical disabilities have given him the alias "Scarman" and the ability to help others facing life's challenges.

Participants include: nurses and other healthcare professionals, social workers, psychologists, hospice, mental health counselors, volunteers, marriage and family therapists, pastoral ministers, seminarians, families, caregivers, and students.

I really enjoyed the workshops and the presentations were very applicable. They are helpful to me professionally and in my personal ministry.

-Sandy RN, BSN



August 21 and 22, 2009 • Community of Christ Temple • www.hmaCofChrist.org

Co-provided by MENTAL HEALTH AMERICA OF THE HEARTLAND

and the COMMUNITY OF CHRIST HEALTH MINISTRIES with support from THE GROVES

Friday, August 21, 2009

5:00 – 7:00 pm Registration
 7:00 pm Welcome
 Announcements
 Spiritual Reflections

**Keynote Address
 Ward Foley**

The wrong place at the wrong time may be what it takes to get you to the one place you want most. This keynote address is about finding what you want most in these unlikely places. Share the joy of seeing your own life--in bold new ways.

Reception follows Keynote.

Saturday, August 22, 2009

7:30 am Registration
 8:00 Prayer for Peace
 8:15-8:45 Welcome and Overview of Sessions
 8:50-10:20 Session I: Scriptural Guided Imagery, Juggling Generations, Depression and Hope, Responding to Financial Distress Part 1
 10:20-10:40 Break
 10:40-12:10 pm ... Session II: Scriptural Guided Imagery, Juggling Generations, Depression and Hope, Responding to Financial Distress Part 2
 12:10-1:10 Lunch provided
 1:10-2:40 Session III: Dancing With Stress, Compassionate Listening, Freud Had It Wrong, Congregational Health Ministry Background, Basics, and Theology
 2:40-2:55 Break
 2:55-4:25 Session IV: Dancing With Stress, Compassionate Listening, Freud Had It Wrong, Implementing Congregational Health Ministry
 4:30-5:00 Spirituality and Healing: Personal Worship and Healing

Depression and Hope



The Reverend Judith Schwanz, MA, MS, PhD, Professor of Pastoral Care and Counseling at Nazarene Theological Seminary

Stacy Davis, MA, Director, Mental Health Promotion, Mental Health America of the Heartland



The Reverend Tarris Rosell, PhD, DMin, Program Associate, Center for Practical Bioethics, Professor of Ethics & Ministry Praxis, Central Baptist Seminary

This session is designed to give participants a basic understanding of what depression is and how to helpfully respond to those suffering from it. Resources and suggestions for teaching this information within a congregational context will be provided. This session will also include an overview of the *Sabbaths of Hope* initiative which helps faith communities understand and address depressive disorders that affect both their congregants and the clergy themselves.

Responding to Financial Stress Part 1 and 2

Bob Fisher is a retired attorney with extensive experience in consumer bankruptcy. He is an ordained Elder in the Community of Christ Church now serving as Associate Chaplain at Centerpoint Medical Center.

Greg Savage, holds the priesthood office of bishop in the Community of Christ. Now pastor at the Stone Church congregation, he served as financial officer for Florida and Southeast Mission Centers.

Jana Castanon is a Certified Financial Counselor and the Community Outreach Director for Consumer Credit Counseling Service.

Alan Zahniser is the Assistant Pastor of Lee's Summit Community of Christ, Ordained Elder and self-employed with Primerica Financial Services.

Josef Walker is a Consultant on congregational mission and organization.

SESSION 1 Participants will study four different financial distress cases and how a church congregation might serve their practical and emotional needs. After attending, they should better understand financial distress issues and how to give emotional support in church or in the workplace.

SESSION 2 Participants will learn about ministry to persons in financial distress aided by experts in consumer credit counseling, bankruptcy law, refinancing and pastoral care. After attending, they should know more about available resources and how to make referrals.

Congregational Health Ministries: Background, Basics, and Theology

Kathy D. Robinson, RN, MSN is Assistant Director of Nursing at the University of Kansas Hospital. She is a high priest in the Community of Christ Church.



This session highlights the creation of congregational nursing and health ministries. The history and background, basics for program focus and approach, and the importance of health ministries and spirituality in church life will be explored.

Implementing Congregational Health Ministry



Paula Rummel, RN is the Executive Director of Community of Christ Health Ministries

This session provides practical steps for establishing health promotion and health ministries in the congregation. The roles of professional nurses and other healthcare staff, as well as that of volunteers in health ministry will be addressed.

Compassionate Listening

The Reverend Ruth Rosell, PhD, RN is the Assistant Professor of Pastoral Theology-Pastoral Care and Counseling at Central Baptist Theological Seminary



This session will explore listening as a compassionate spiritual and healing practice. Participants will improve their listening and responding skills by practice listening to one another.

Juggling Generations



Sandra J. Silva, Esq., Executive Director of Alliance on Aging, Lawyer, Befriender Ministry Training Coordinator, and Caring Conversations facilitator.

Sometimes subjects that are most important to a family are difficult to deal with and therefore easy to "talk about later." This session offers ways families can successfully engage in meaningful, productive conversations about life transitions and events including medical and mental health issues, caregiving and caseplanning.

Freud Had It Wrong

Catherine E. Madden, MD, board certified in Child and Adolescent Psychiatry and Psychiatry, Children's Mercy Hospital and Clinics



The field of mental health was dominated for many years by the theories of Freud, who considered religion "infantile" and a "neurosis." Now it is largely dominated by science, psychiatry and medicine; however, we are discovering the importance of religion and spirituality in the healing process. This session will explore the physical-emotional-spiritual continuum and the importance of religion and spirituality in the healing process.

Scriptural Guided Imagery



Alice Sims, BSN, Leadership Training Specialist, Clinical Pastoral Education certificate, ordained Community of Christ evangelist.

Alice will lead participants through scripture as a form of finding God and healing the soul. Participants will be sharing information and experiencing guided imagery to understand the process, complementary music, sensory involvement, and positive benefits for enhanced worship and deeper spirituality.

Dancing With Stress and Hunting for God in the Ballroom: Exploring the Night and Day of Life Through Drama



Hemdah Salonimer-Horner holds a Master's degree in Piano Performance from UMKC. She teaches for Dramatic Truth School of the Arts. John Arthur Horner earned his Ph.D. in Dramatic Art from the University of California at Santa Barbara.

The goal of the session is to help the participants discover different ways in which drama can be approached from a spiritual perspective in order to explore life's stresses and joys, through ways they intertwine, and the healing power of dramatic expression.

Registration Form

Name _____
 Address _____
 City _____
 State _____ Zip _____
 Phone _____
 Fax _____
 Email _____

Early Registration

Friday Keynote: **FREE**
 Saturday Workshops including lunch \$50.00
 Seniors over 65 years of age \$45.00
 Students - **buy one bring a friend for free!** \$25.00
 Fee for Continuing Nursing Education Credit \$20.00
Late registration after August 7 please add \$10.00
Total _____

Please return this form with your registration fee to:
 HMA, 1001 W. Walnut Independence, MO 64050
 816-833-1000, ext. 1262 • www.hmaCofChrist.org

To charge your registration, call our office
 816-833-1000, ext. 1262

